



## Odessa Street, London, SE16 7GA

An immaculately presented and spacious one bedroom apartment located in an award winning prestigious riverside development in Rotherhithe. Featuring a generous balcony overlooking the iconic London Skyline as well as the River Thames, this brand new sixth floor apartment boasts a naturally bright open plan living area with a high spec bespoke kitchen and oak flooring throughout, a spacious bedroom with generous built-in wardrobe and direct access into the private balcony, a stylish bathroom, and a laundry / storage room by the entrance hall. Conveniently located moments from the Greenland Pier jetty and The Doubletree Docklands Nelson Dock Pier for a five minute commute to Canary Wharf, as well as within easy reach to Canada Water Underground Station the property is ideal for professional tenants, wanting to escape the hustle and bustle of the city in one of the most picturesque and green residential areas without giving up the privilege to live in the heart of London.

- Modern Riverside Apartment
- Generous Living Room
- Private Balcony
- Stunning Views
- Picturesque Setting
- Stylish Bathroom

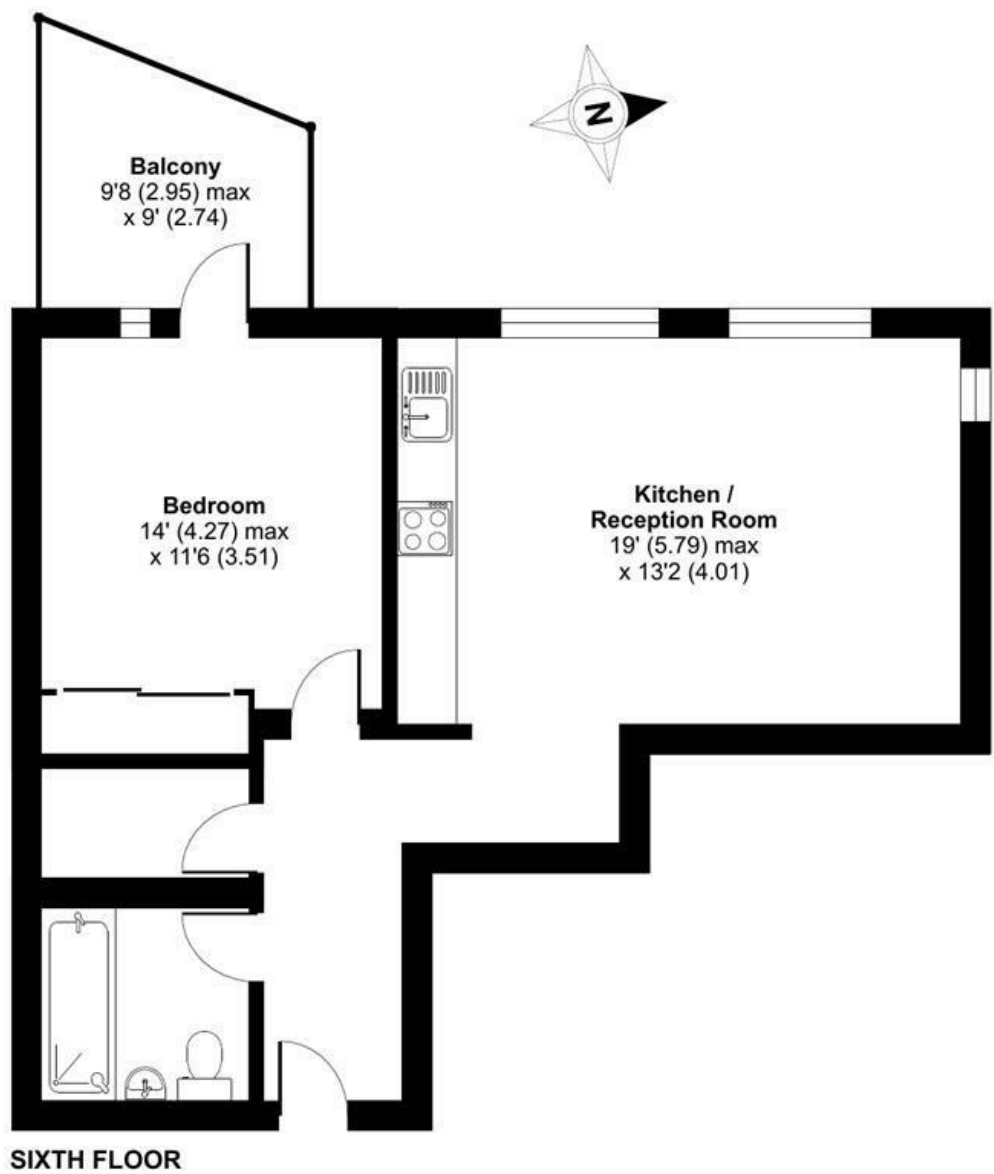
**Alex & Matteo**  
ESTATE AGENTS

**£1,900 Per month**

Odessa Street, London, SE16

Approximate Area = 586 sq ft / 54.4 sq m

For identification only - Not to scale



Alex & Matteo  
ESTATE AGENTS



Certified  
Property  
Measurer

Floor plan produced in accordance with RICS Property Measurement Standards incorporating International Property Measurement Standards (IPMS2 Residential). © nitchecom 2024. Produced for Alex & Matteo Estate Agents. REF: 1144816

Energy Efficiency Rating		
	Current	Potential
Very energy efficient - lower running costs		
(92 plus) A		
(81-91) B	84	84
(69-80) C		
(55-68) D		
(39-54) E		
(21-38) F		
(1-20) G		
Not energy efficient - higher running costs		
England & Wales		
EU Directive 2002/91/EC		